



[Wiikey - UK Stock - £9.99](#)

Includes wire, solder, diagrams and a free trigram screwdriver!
www.PinpointGames.com

[A new Xbox 360 for £3.71](#)

The hammer fell at £3.71 this time Don't miss the next one!
www.TeleBid.com/_Xbox360

[Xbox - 78 %](#)

The Xbox drops 78 %. Now you can get the xBox for 2/3 the price...
www.bestcent.co.uk



Ads by Google

BACKUP and FLASH OF THE NAND USING THE CHIP INFECTUS

Before starting the assembly may I say a couple of things:

This process of reading and rewriting of NAND need in order to exploit a Bug on this Dash 4532 and 4548 that allows the start of Linux Xell

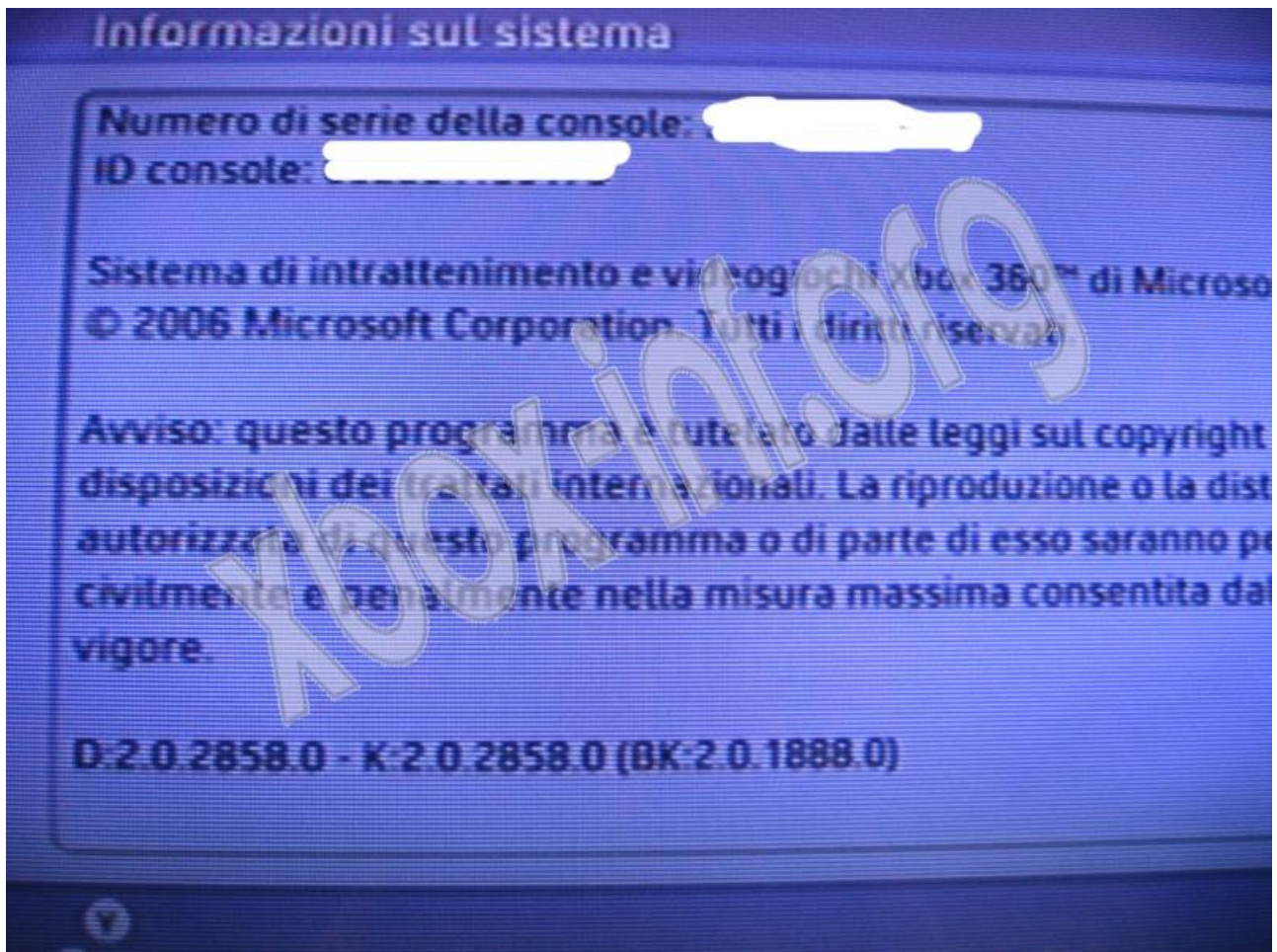
- This tutorial is absolutely useless to everyone who updated periodically over Xbox Live-their consoles for 2 reasons:

- the first is that, unless you have a Backup NAND or equal to the previous version 4532 and 4548, you can not use this feature because there is the possibility of using Dash REALLY different from those belonging to the console, then you can not take a Dash from a friend (which also is illegal) and put it on your console, because of a control processor that the Xbox 360 is when you start: in practice the processor assigns a signature undeletable to NAND and Dash

- the second is that with Dash 4552 (the last exit) there will regress to the 4548 version by a check written on the CRC processor where it is inserted the date and version of Dash signed, it follows that it is not possible regress as the date of update does not correspond more and console launch.

This, in principle, and explained in broad terms (to be understood by all) is the principle of both mentioned EFUSE.

To learn how to determine your version of Dash do not have but to turn the console and go into system settings, there should appear on "D" and "K" maximum version 2.0.4532 or 2.0.4548 (or earlier 2.0.2858 ... or as in my case):



Once verified the goodness of our Dashboard can proceed to the assembly of our chip Infectus, to do this we need:

- A chip Infectus available at our sponsors Hardstore: Click
- A welder from 11W (recommended) pointed fina by 0.5mm (recommended) or max 1 mm
- Tin wire from 0.6mm or less but would be recommended tin paste
- Wire autoeject AWG 30
- Fluxant or at least pulp (or pasta firm)
- braid absorption pond
- Tape b
- USB cable type A / B MINI to program the chip

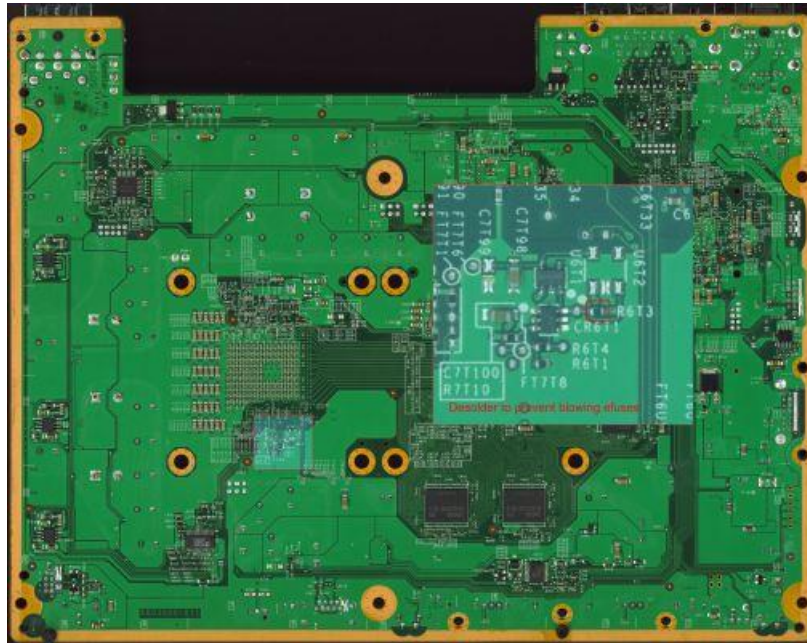
In addition, if you want to go right to work you need

- A magnifying glass
- Good manual
- Steady hand


IMPORTANT:

This installation is recommended for all users who have a discreet or even good knowledge of electronics and especially a good manual in the welder. The procedure that was to run INVALID fully guaranteed ORIGINAL

We shall now proceed to remove a particular resistance that will prevent the console generate EFUSE with all future updates-released on Xbox Live, the resistance in question is R6T3 and is located at the bottom of the motherboard, near the sink processor: for that you refer to the diagram below:

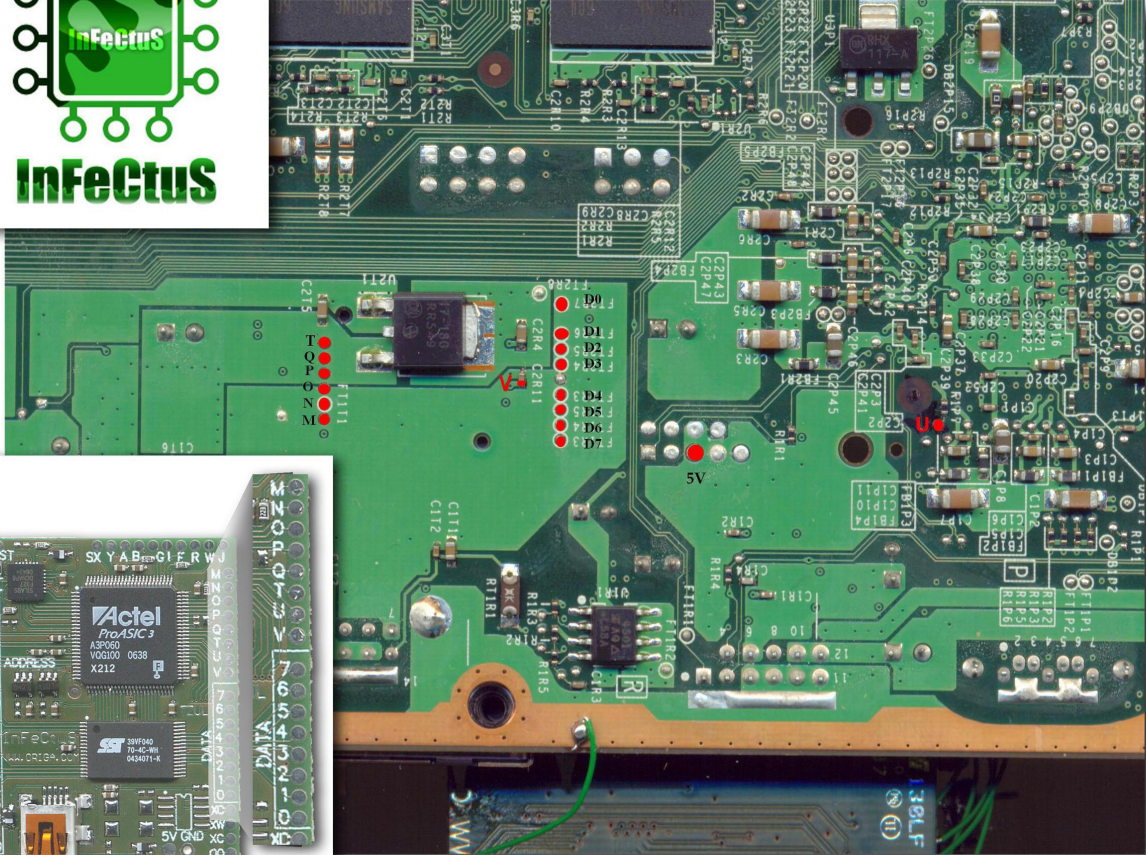


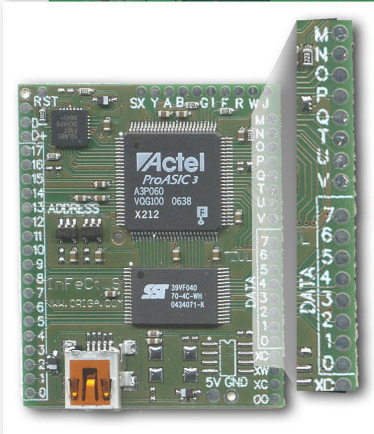
Once removed the resistance we can proceed to mount the chip Infectus, we should not do but to follow the chart below:



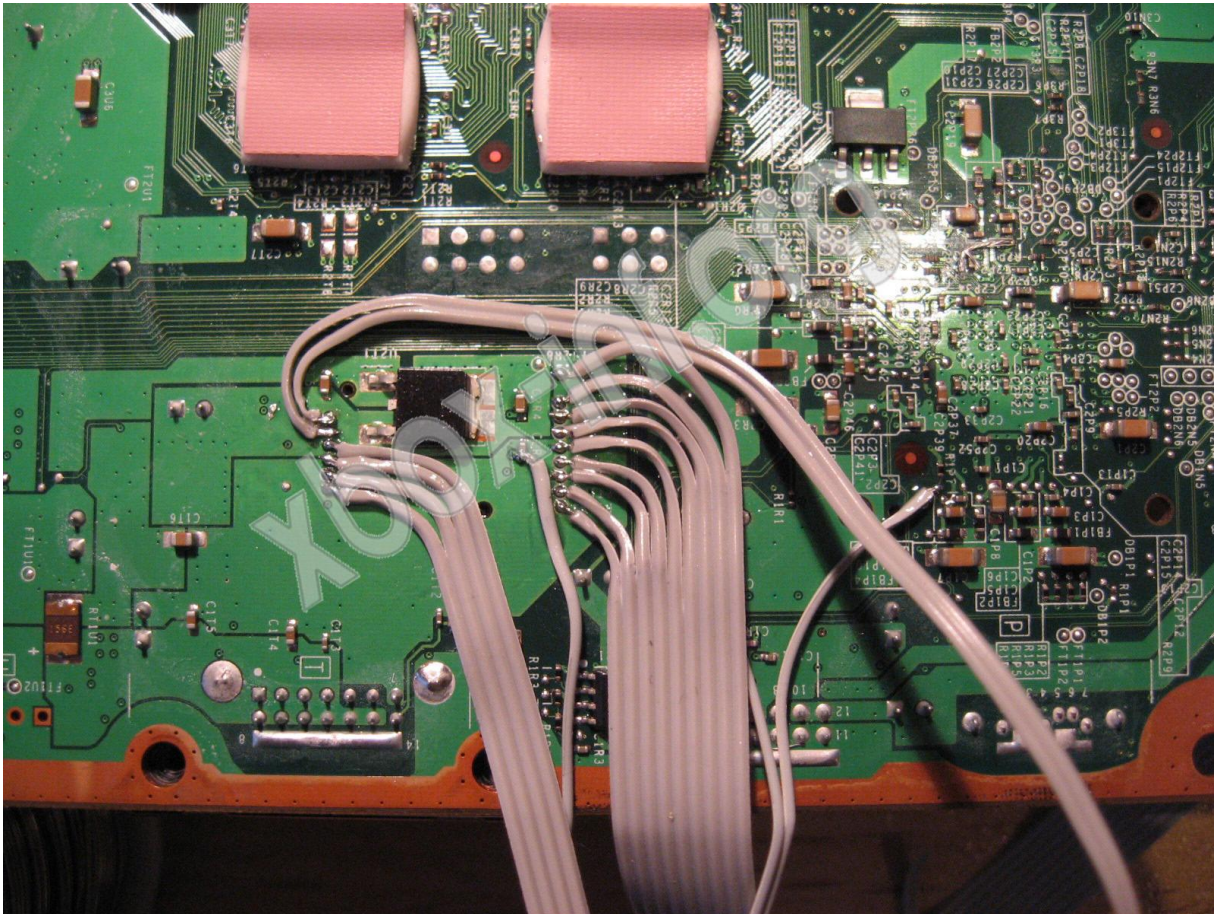
INFECTUS X360 NAND FLASHER DIAGRAM

r.1.4 23/07/07





You must be very careful positioning of wires and chips, since, working on the contrary will need to calculate the length of wire which then must exit the motherboard and get to:



At the end of everything we set with tape the chip on the console metal casing, remount the reader and proceed to control operating console, once verified the proper operation of 'Xbox 360 can proceed with the backup of our NAND.

[Run Backup of NAND --->](#)

For technical support click here: [Forum Xbox-Inf](#)

THANKS: [Hardstore](#), [Oscar Dalvit](#), [Splinter](#), the [Hardstore Team](#) and the [Origa Team](#)

Tutorial Written by Titty and translated by ShadowX24 for the Xbox-Inf Forum

