

[Wiring Assembly](#)
Electronic/electrical wire sub- assemblies.
ISO9001:2000
www.connect-2-technology.co.uk

[PCB Assembly](#)
PCB Assembly Services Excellent Quality!
www.maguselectronics.co.uk

[apeTape® Reflective Tape](#)
Reflective Tape, Sheeting, Paint, Fantastic
Prices & Quality
www.apeTape.co.uk

Ads by Google



TUTORIAL FOR INSTALLATION OF THE CHIP INFECTUS ON THE BENQ READER

IMPORTANT:

THE STEPS AND PROCEDURES ABOVE IN THIS GUIDE REFER TO BOTH VERSIONS OF CHIP OUTPUT INFECTUS

First we need:

- Of dichloromethane present on the paint strippers from home (indispensable if have got models 0078)
- welder at 11W (recommended) thin pointed at 0.5mm (recommended) or lesser extent
- Tin wire from 0.6mm or less but would be recommended the pond paste
- the autowire eject AWG 30
- the fluxed
- Braid absorption pond
- the tape
- the cable USB type A/MINI B for programming the chip

In addition, if you want to go right to work you need

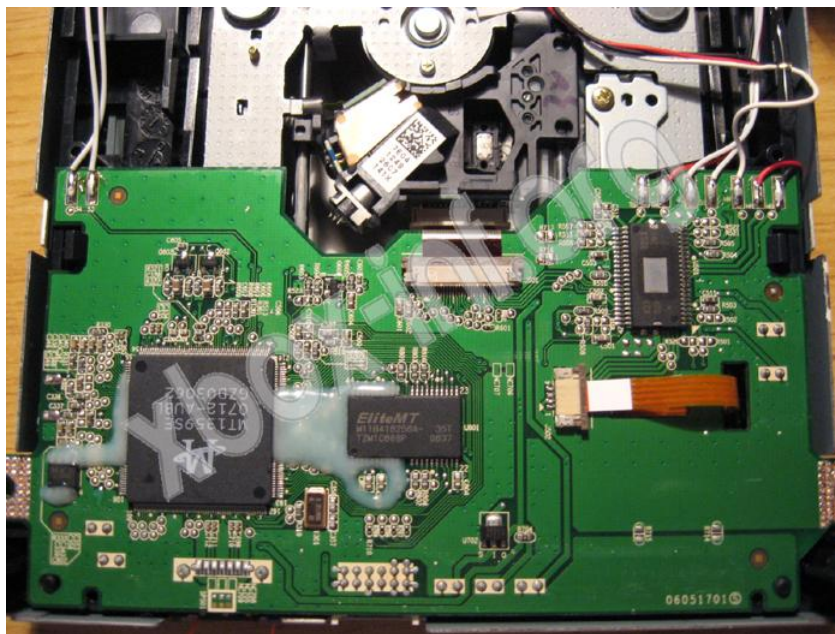
- A magnifying glass
- Good manual
- Steady hand

IMPORTANT:

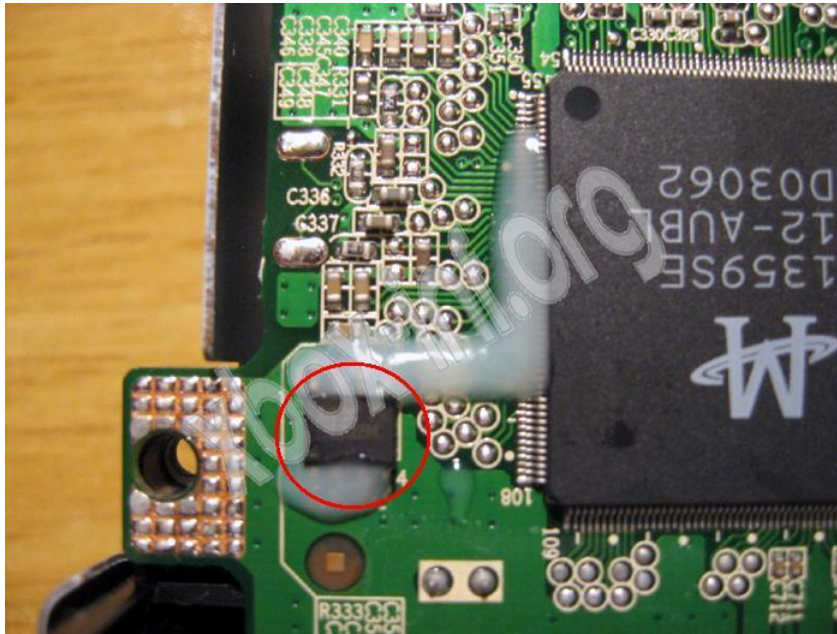
This installation is recommended for all users with a discreet or even good knowledge of Electronics and especially a good manual in the sordeles. The incorrect assembly or Misuse Some equipment may damage IRRETRIEVABLY the reader and the console

Having said that begin:

- Firstly dismantle the console
- Disassemble the reader while to see the PCB :



- And then focus on the part where is the flash (where the FW) of the reader:



- It is better to totally remove the protective resin flash of the reader, we agreed to do this use of Dichloromethane (Available on paint strippers from home in gel. Use of this solvent is particularly sensitive, it should be handled with care, with the hands Protected by gloves and especially in places areati. If you are holders of Samsung MS25 removing the resin occurs in a short time: Just laying a layer of solvent 3mm above it and wait ... After about 3 hours to remove all with A cotton or a toothpick, you will see that the resin is completely disappeared leaving your flash Perfectly clean, it may also be necessary to repeat this procedure several times and it is said that all

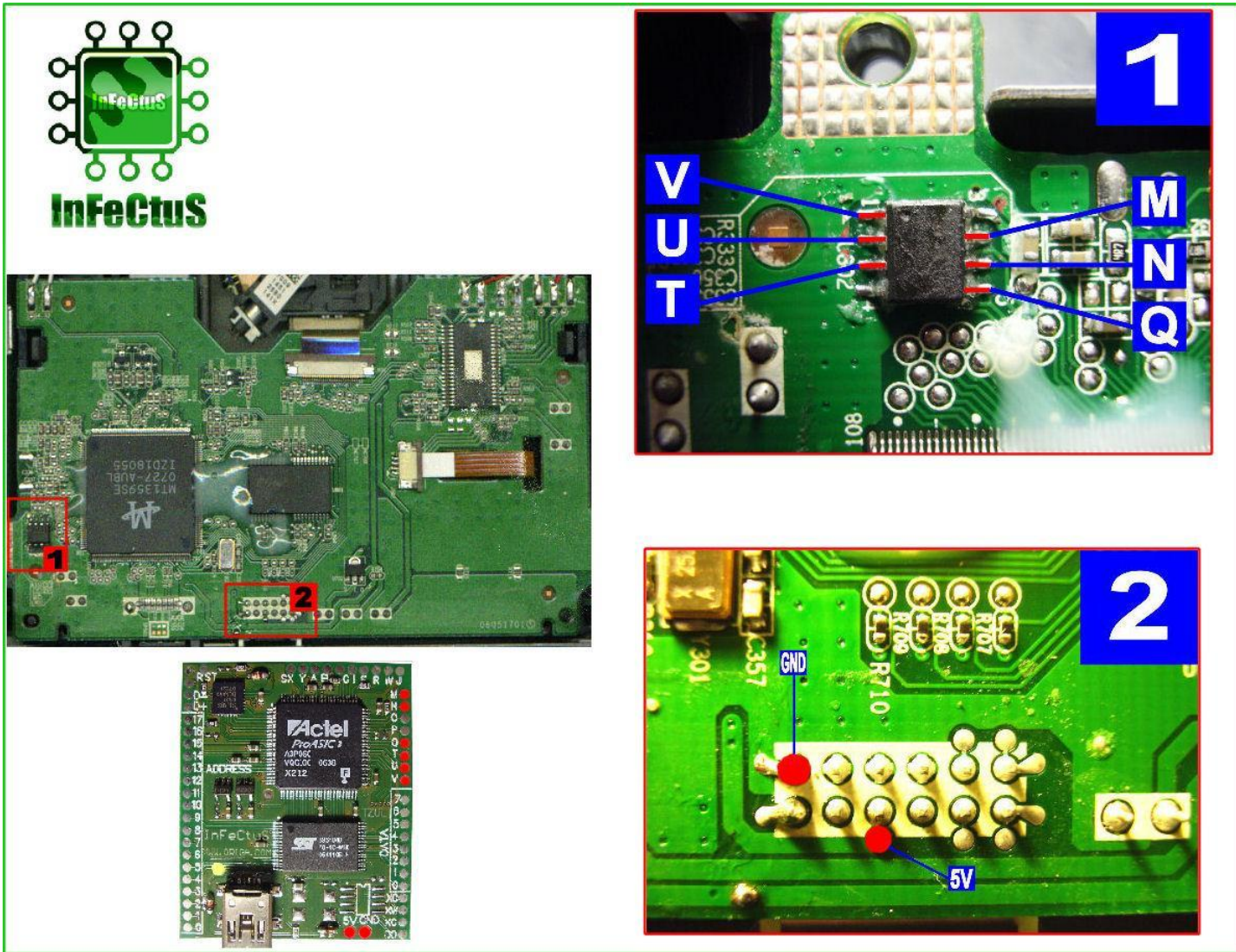
Glue disappear, however I assure you that the work area will be cleared and cleaned.

I want to make it clear that the solvent that is used does not affect in any way the components of your READER

- A work concluded, your PCBs will be cleaned like this:



- We can go to the assembly: the first thing you should, following the original scheme mounting dell'infecus Placing the wires necessary for the proper functioning:



- How can see Solder wires are few and not particularly complex ... To work should have done something like:





- Now there remains only connect the wire RTD that will decide whether to start our console with the original FW or FW Hack:



- If we can connect a led to an "SX" and "Y" remembering that the positive should be led connected to the "SX" and the negative at "Y".

- Remount everything on the console, connect the USB cable and do the programming of our chip Infectus

[Back to Start](#)

[Programming the chip Infectus for Function Dual Firmware on readers Benq -->](#)

For technical support click here: [Forum Xbox-Inf](#)

THANKS: [Hardstore](#), [Oscar Dalvit](#), [Splinter](#), the [Hardstore Team](#) and the [Origa Team](#)

Tutorial Written by Titty, translated by ShadowX24 for the Xbox-Inf Forum

