

[Xbox 360 Repairs](#)

All Repairs, 3 Red Lights Kit 3 Day Turnaround - 0800 043 8140  
[www.cd24-7.co.uk](http://www.cd24-7.co.uk)

[Firmware Updates](#)

Update Drivers in Under 2 Minutes. Free Download. 100% Guaranteed.  
[www.Driver-Updates.net](http://www.Driver-Updates.net)

[A new Xbox 360 for £29.26](#)

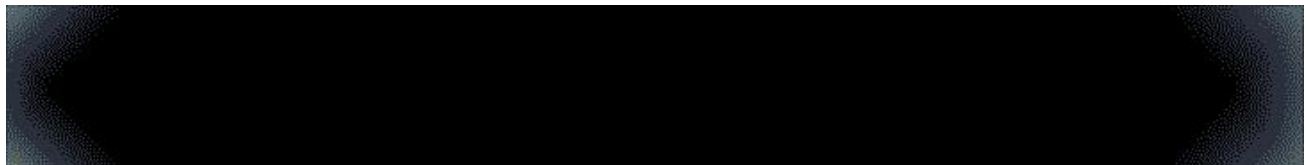
The hammer fell at £29.26 this time Don't miss the next one!  
[www.TeleBid.com/\\_Xbox360](http://www.TeleBid.com/_Xbox360)

[Xbox - 78 %](#)

The Xbox drops 78 %. Now you can get the xBox for 2/3 the price...  
[www.bestcent.co.uk](http://www.bestcent.co.uk)



Ads by Google



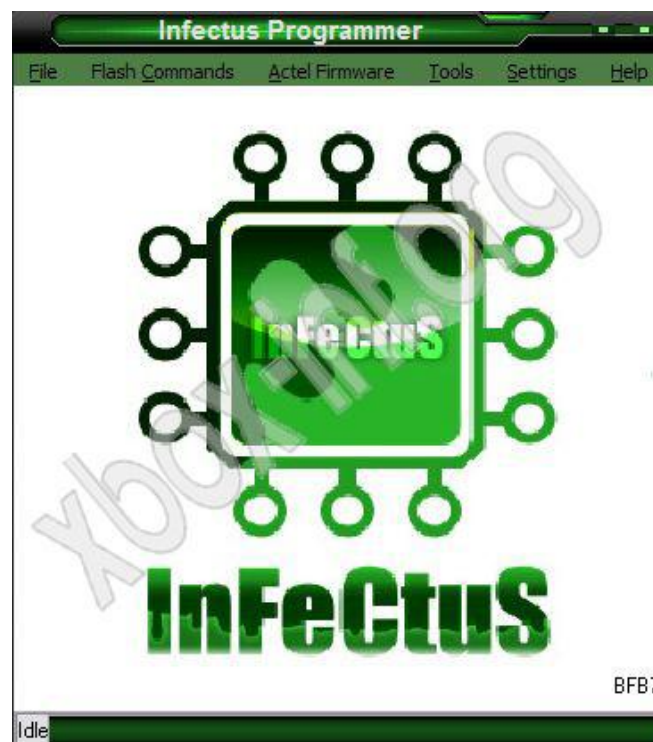
# TUTORIAL FOR INSTALLATION OF THE CHIP INFECTUS ON THE HITACHI READER

## Programmazione di Infectus

First you must:

- Download and installed the program that are here: [Click](#)
- Downloaded and installed the drivers that serve to recognize the Infectus System: [Click](#)
- Program available regarding FTP FWToolBox of Xbins
- The latest available regarding FTP Fw Xtreme of Xbins

You switch your console Infectus connect to the USB port and start the program:



There are several versions of Firmware for Hitachi readers to know what kind of firmware controlled mounts on your reader:



**WARNING:** To enable the proper planning of readers Samsung, arrived at this point must necessarily turn on the console:  
 Not worry whether or not to enable the chip, Wizzard is designed to flashing only Infectus and not the original Flash of the reader  
 (Henry of Hardstore Thank you for the interesting straight)

If your reader is a less than or equal to 0059 must go under "ACTEL FIRMWARE" and select "GLOBE360 V0.1H" and press "UPDATE":



If your reader is a 0078 version you have to go under "ACTEL FIRMWARE" and select "Infectus Hitachi 078" and press "UPDATE":



The planning process begins:





If all went well in the sense programming at the end of this program will result if you have a reader Hitachi until 0059:

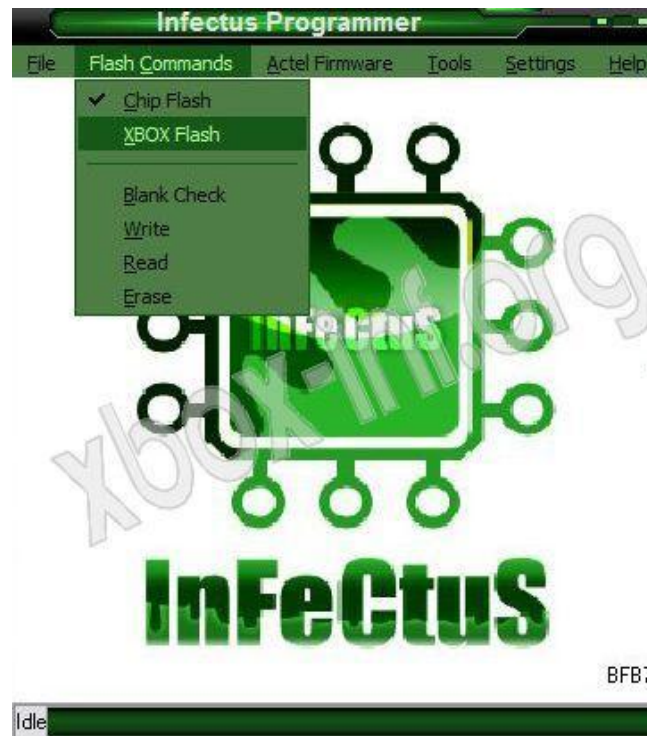


Or that if you have a Hitachi 0078:

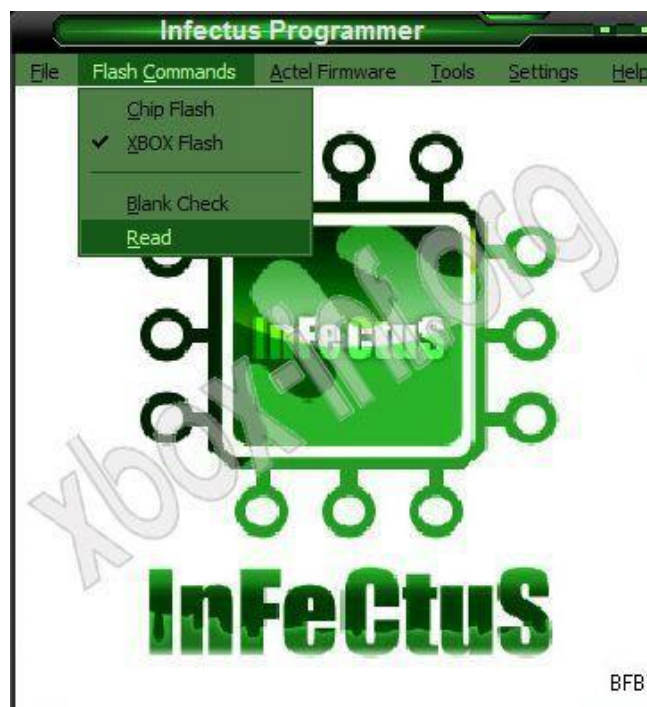


If you make a mistake programming sure that the console is turned on during the programming and if despite this still gives error Double carefully welds made during installation.

We shall now proceed to the reading of the original FW on the reader: we go on "Flash Command \ Xbox Flash":



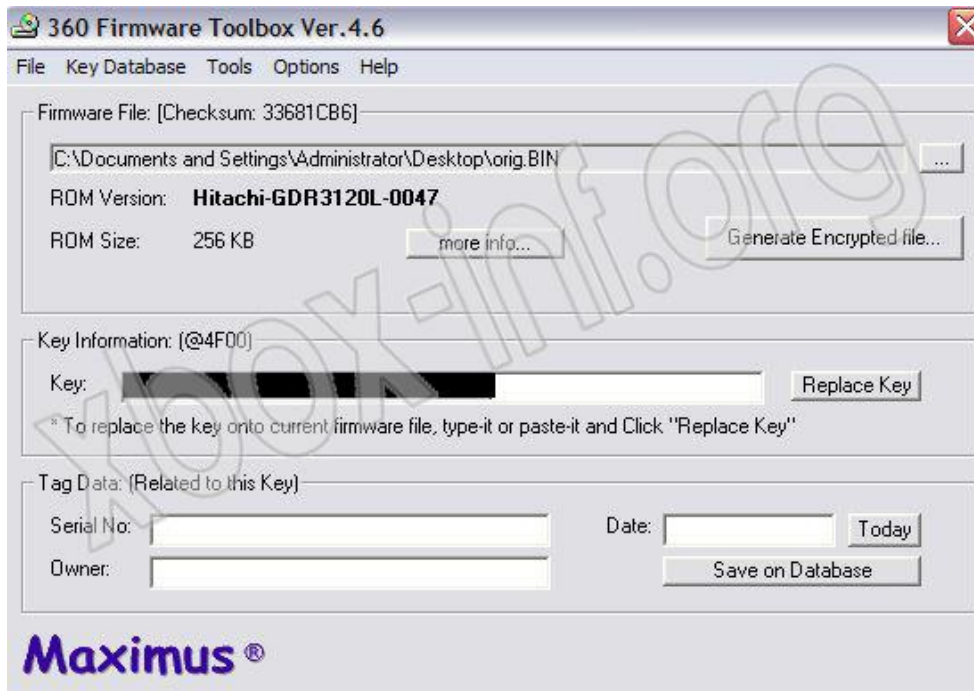
And Selecting the command "READ":



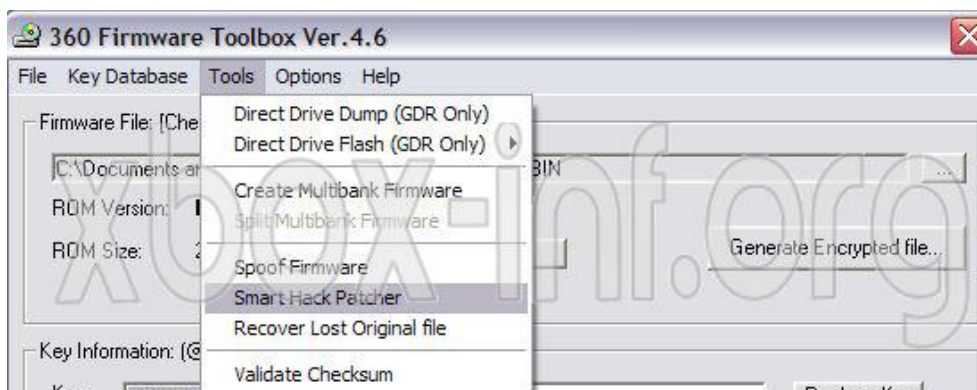
There will be asked to file a name (which ORIG.BIN council) and then start reading FW:



Opening the FwToolbox program and switch to the backup of our Fw:



**Go Now on Tools \ Smart Hack Patcher:**



**Clicking OK on the Pop-up that will be showed:**

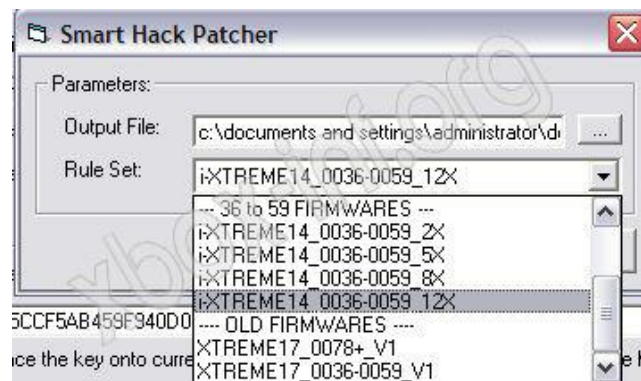


**And we will present a window where we have a number of options:**

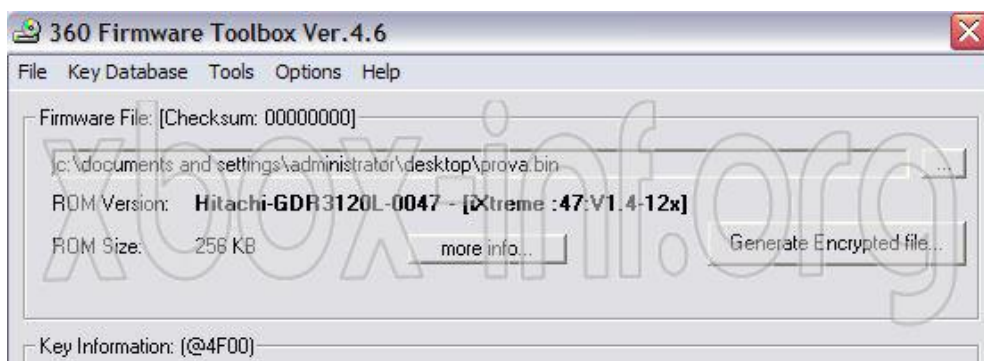
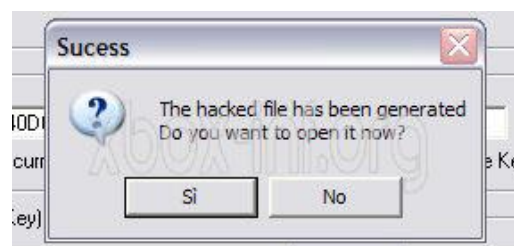
**- IXtreme14\_0036-0059 for those who do not know is that the Fw in theory puts us away from Ban Xbox Live-proposed 4 different speeds Reading (2X, 5X, 12X and 8X)**

**- XTreme17\_0036-0059 for those who do not know is that there Fw puts away from Ban Xbox Live**

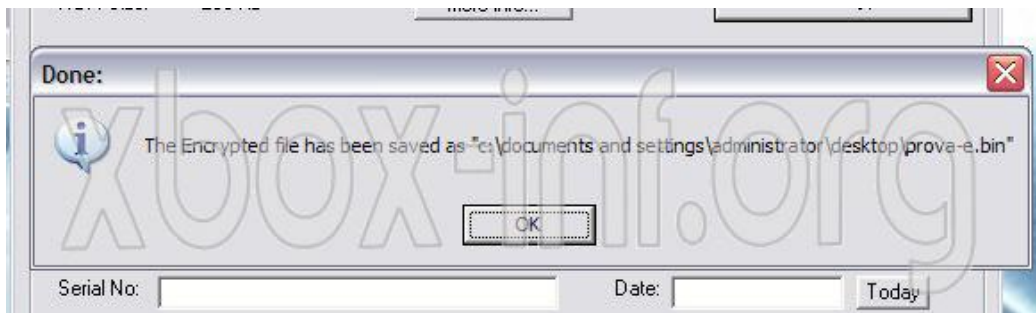
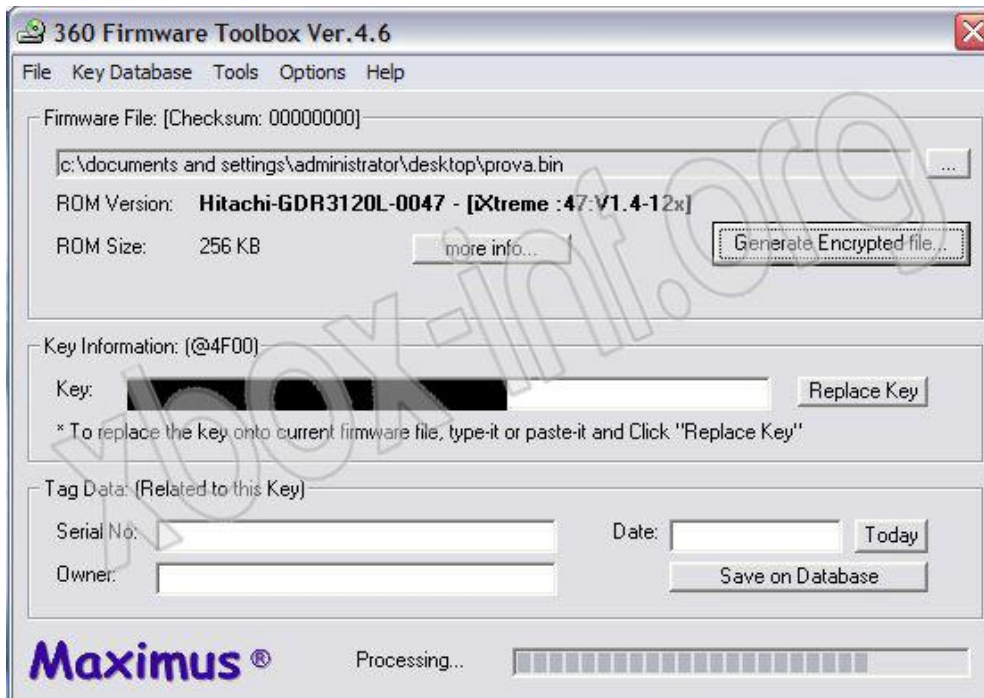
I will recommend you use the Fw xTreme17\_0036-0059 (the selection that's why it's only for the leadership):



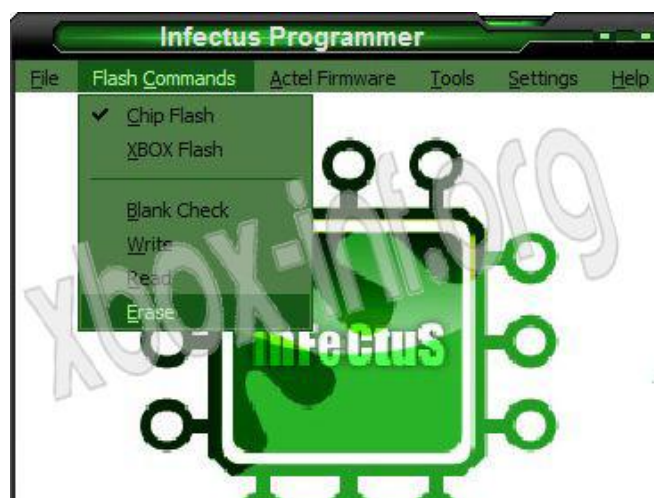
There will be asked if we want to open the Fw newly created us and we::



The Fw just created is not yet ready, to get there you must correctly cripting, as FW are Hitachi One we have cripting into the flash to do this just click on "Generate Encrypted File ...", The proceedings will last a few seconds and the program will create a file with the same name of the source but with a more "-and (Which means encrypted) "in front ... if for example, the file is called originally prova.bin once scrambled become test-e.bin



Very well, we can proceed now to write FW on our Infectus Chip ... Go on "Flash Command, control That is selected Chip Flash and select "ERASE":



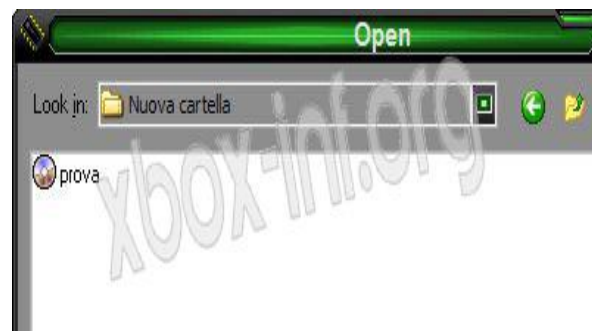
We confirm the warning:



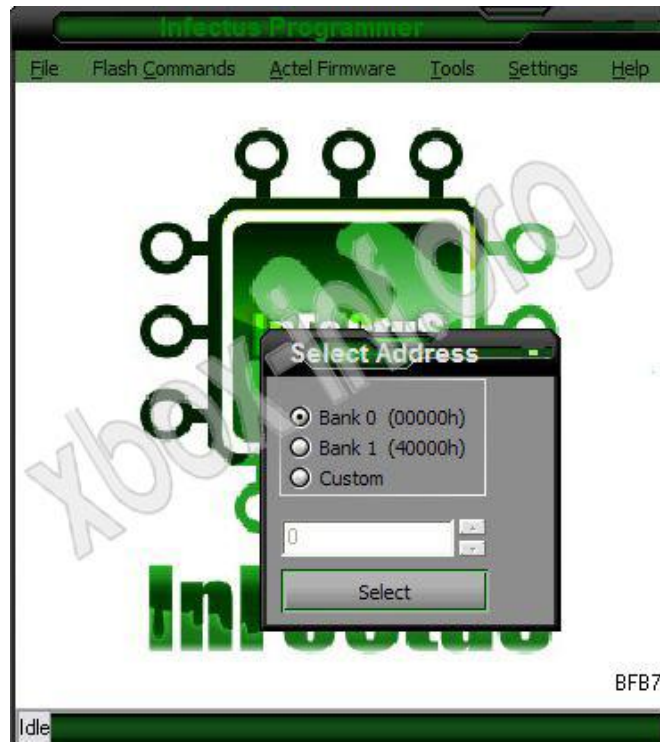
We select now command "Write":



We will select our FW:



Let default request of the program that the bank write FW:

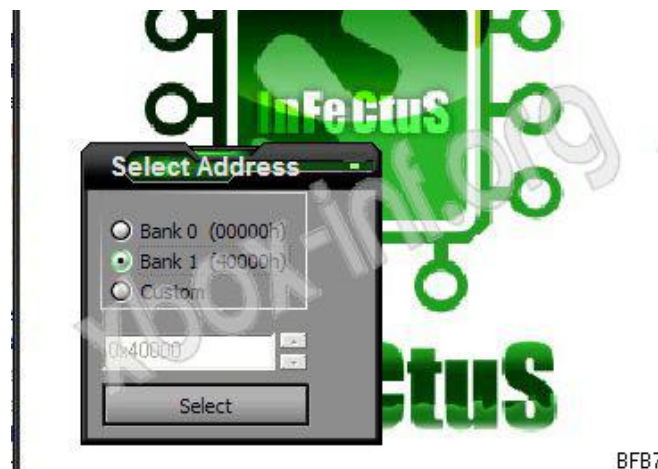


And expect that the program will end writing FW on Flash:





If you have a chip Infectus 2 can decide to flashing the second bank available in order to have the console Fw 3, do not have to do nothing but follow the same procedure done before, only that when you are asked to choose bank 1:



We can restart the console and go and try our chips just programmed.

[Back to Start](#)

For technical support click here: [Forum di Xbox-Inf](#)

**THANKS:** [Hardstore](#), [Oscar Dalvit](#), the [Hardstore Team](#) and the [Origa Team](#), [Splinter](#) and [Marco Borghi](#)

Tutorial Written by [Titty Pioppa](#) and [Ranasaltella](#), translated by [ShadowX24](#) for the [Xbox-Inf Forum](#)

