

TUTORIAL FOR INSTALLATION OF THE CHIP INFECTUS ON THE HITACHI READER

IMPORTANT:

THE STEPS AND PROCEDURES ABOVE IN THIS GUIDE REFER TO BOTH VERSIONS OF CHIP OUTPUT INFECTUS

First we need:

- Of dichloromethane present on the paint strippers from home (indispensable if have got models 0078)
- welder at 11W (recommended) thin pointed at 0.5mm (recommended) or lesser extent
- Tin wire from 0.6mm or less but would be recommended the pond paste
- the autowire eject AWG 30
- the fluxed
- Braid absorption pond
- the tape
- the cable USB type A/MINI B for programming the chip

In addition, if you want to go right to work you need

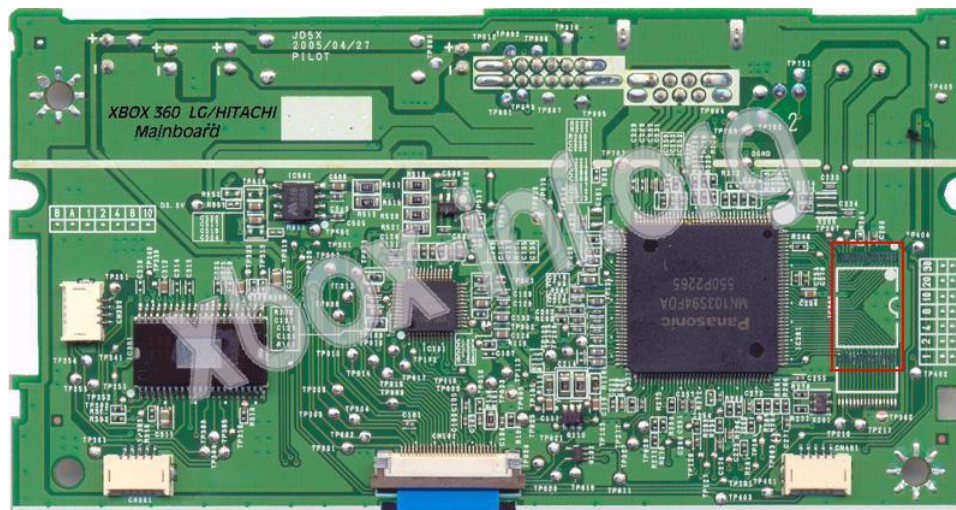
- A magnifying glass
- Good manual
- Steady hand

IMPORTANT:

This installation is recommended for all users with a discreet or even good knowledge of Electronics and especially a good manual in the stagnatore. The incorrect assembly or Misuse Some equipment may damage IRRETRIEVABLY the reader and the console

Having said that begin:

- Firstly dismantle the console
- Remove the lid bottom of the reader so you can see the SRP and then focus on the part where the SST SST39LF020A (Where the FW) of the reader. If you have a model of Hitachi prior to the 0078 version your PCBs will be like this (This picture lacks the SST, which should be located in the area marked):



- If your model is 0078 Hitachi your PSB will be covered by a black glue and lasts ... Very hard, as I will explain later My advice is to use the calm and Dichloromethane, work will be cleaner and safer especially, using hot air or cutter is Only risks irreversible damage to the PSB reader

- Remove the resin fully protective of the Flash player, do we agree to have Dichloromethane (Available on paint strippers from home in gel. Use of this solvent is particularly sensitive, it should be handled with care, With hands protected by gloves and especially in places areati. The time for action is the solvent around the 8 / 10 hrs May also be necessary to repeat this procedure several times and it is said that all the glue disappear, however I assure you that the area Work will be clear and clean.

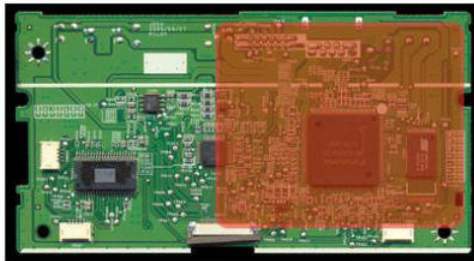
- Once removed the protective resin and placed chip, we can start working ... First let's take a look at the scheme of the Infectus link on Hitachi readers:

INFECTUS THE ONE

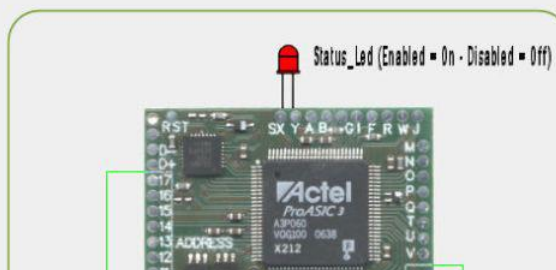
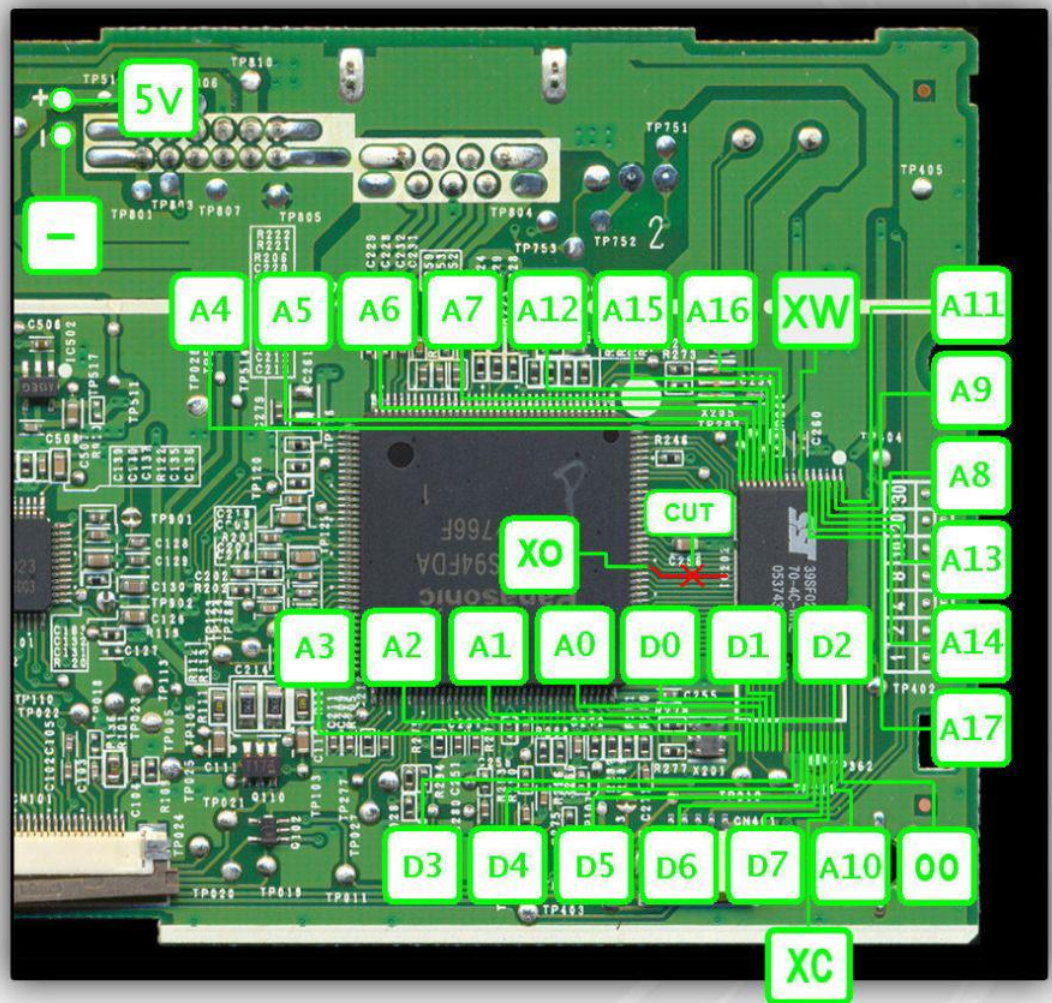
LG/HITACHI DVD-DRIVE

xbox-i

DVD MAINBOARD



360PWR SWITCH



First we start the work i want give us a tips for this reader :

I will tips that not cut the relative tracks at point XO but to raise gently the pint of the logic so you can recover everything

- How the exit zone to FLAT we must use the side of reader

Now start with mounting , the flat allow to avoid the long wire in circle in the reader , we will use one insulated copper little wire that we must use for attach directly on the flash of own reader

The mounting is very easy , at every point of the flat refer at footsie of the flash , the mass and the feeder will be reported always at same flat , the mounting is very cleaner and beautiful to see

I will tips you to give more attention to not touch the wire , if do this there is a courts so be careful !

At mounting ultimate the situation will be this :



Before to close the reader i will tips you to fould the sheet in the lower cover so we can allow the passage of the flat without damaged:



When the windows for the passages of the flats are open we can remount the reader in the console, connect the cable usb and do the programming of the infectus

[Back to Start](#)

[Programming the Chip Infectus on Hitachi reader -->](#)

For technical support click here: [Forum di Xbox-Inf](#)

THANKS: [Hardstore](#), [Oscar Dalvit](#), [the Hardstore Team](#) and the [Origa Team](#), [Splinter](#) and [Marco Borghi](#)

Tutorial Written by Titty Pioppa and Ranasaltella, translated by ShadowX24 for the Xbox-Inf Forum

