

## TUTORIAL FOR INSTALLATION OF THE CHIP INFECTUS ON THE HITACHI READER

### IMPORTANT:

THE STEPS AND PROCEDURES ABOVE IN THIS GUIDE REFER TO BOTH VERSIONS OF CHIP OUTPUT INFECTUS

First we need:

- Of dichloromethane present on the paint strippers from home (indispensable if have got models 0078)
- welder at 11W (recommended) thin pointed at 0.5mm (recommended) or lesser extent
- Tin wire from 0.6mm or less but would be recommended the pond paste
- the autowire eject AWG 30
- the fluxed
- Braid absorption pond
- the tape
- the cable USB type A/MINI B for programming the chip

In addition, if you want to go right to work you need

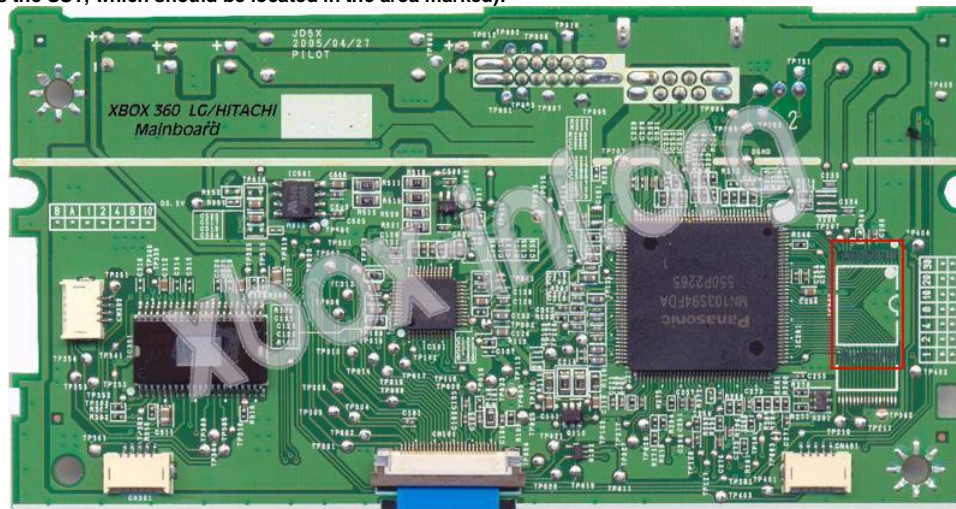
- A magnifying glass
- Good manual
- Steady hand

### IMPORTANT:

This installation is recommended for all users with a discreet or even good knowledge of Electronics and especially a good manual in the stagnatore. The incorrect assembly or Misuse Some equipment may damage IRRETRIEVABLY the reader and the console

Having said that begin:

- Firstly dismantle the console
- Remove the lid bottom of the reader so you can see the SRP and then focus on the part where the SST SST39LF020A (Where the FW) of the reader. If you have a model of Hitachi prior to the 0078 version your PCBs will be like this (This picture lacks the SST, which should be located in the area marked):



- If your model is 0078 Hitachi your PSB will be covered by a black glue and lasts ... Very hard, as I will explain later My advice is to use the calm and Dichloromethane, work will be cleaner and safer especially, using hot air or cutter is Only risks irreversible damage to the PSB reader

- Remove the resin fully protective of the Flash player, do we agree to have Dichloromethane (Available on paint strippers from home in gel. Use of this solvent is particularly sensitive, it should be handled with care, With hands protected by gloves and especially in places areati. The time for action is the solvent around the 8 / 10 hrs May also be necessary to repeat this procedure several times and it is said that all the glue disappear, however I assure you that the area Work will be clear and clean.

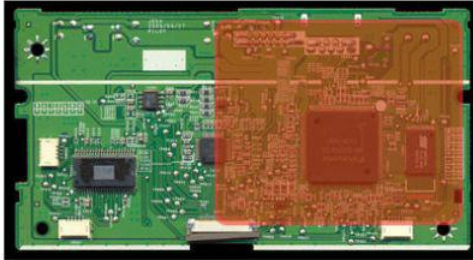
- Once removed the protective resin and placed chip, we can start working ... First let's take a look at the scheme of the Infectus link on Hitachi readers:

# INFECTUS THE ONE

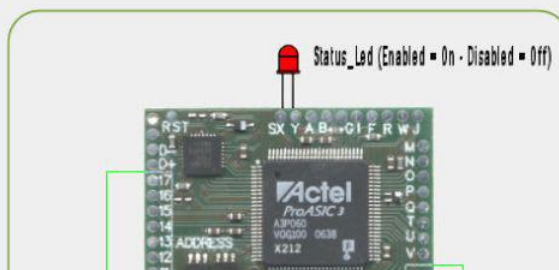
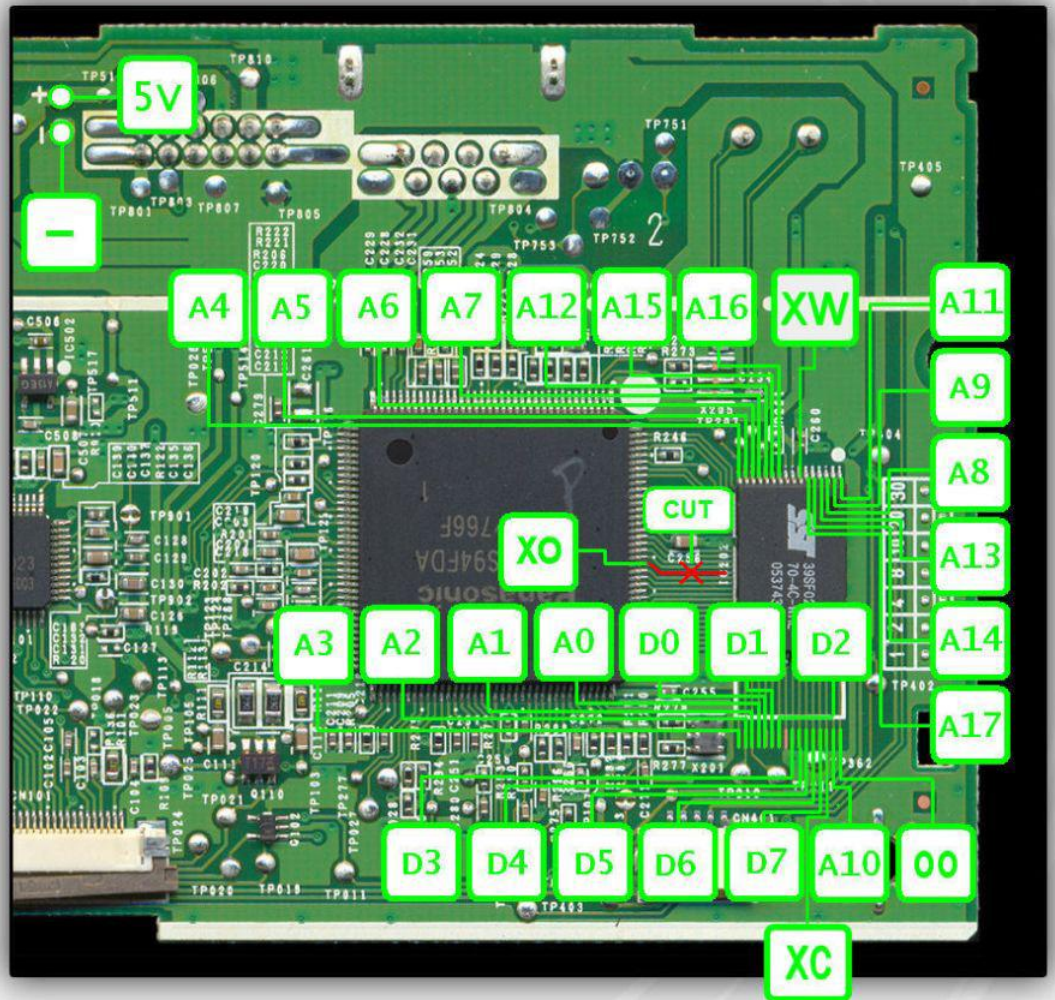
## LG/HITACHI DVD-DRIVE

xbox-i

DVD MAINBOARD



360PWR SWITCH



Before joining let me give you a couple of suggestions regarding this reader:

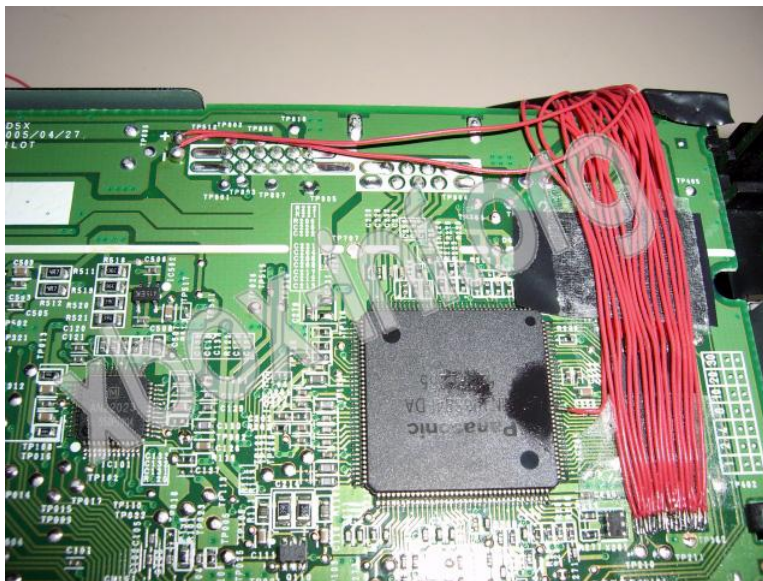
- You should not cut the track on the XO point but to raise pin of logic so that we can Possibly recover all

- Output area as wire I used the plug SATA close to the reader, because this is the most direct and I Allowed a good deal of leeway, especially you can get out directly with the vile limiting maximum joints and curves

Now to the assembly itself, starting with the connecting wires directly on the flash:



We continue now with the assembly of the remaining points ... Taking into account the advice that I have given previously to work finished You will have to meet a similar situation:



To facilitate the transition of wires would be advised to open a small window on the upper and lower houses of the reader (Or with forceps deform so to pass easily wires), and in this way avoid the crush considerable amount of Wire we just mounted:



Once the windows is open for the passage of wires, we can proceed to link them directly on the chip. A mounting finished remount the reader on the console, connect the USB cable and do the programming Infectus.

[Back to Start](#)

[Programming the Chip Infectus on Hitachi reader -->](#)

For technical support click here: [Forum di Xbox-Inf](#)

**THANKS:** [Hardstore](#), [Oscar Dalvit](#), [the Hardstore Team](#) and the [Origa Team](#), [Splinter](#) and [Marco Borghi](#)

Tutorial Written by Titty Pioppa and Ranasaltella, translated by ShadowX24 for the Xbox-Inf Forum

