

# 79 PASSKEY FLAT CABLE INSTALLATION

REQUIRED: Desolder Braid, Drop of Glue, Solder and Solder Iron, Tape

Step 1 / Paso 1 – Remove EPOXY OVER SPARE PADS



Step 2 / Paso 2 – Put Solder over the Pads



Step 3 / Paso 3 – Remove Solder from Round Pads



Step 4 / Paso 4 – ALIGN CONNECTOR AND FIX FIRST PIN



Step 5 / Paso 5 – Put Solder over the Pins



Step 6 / Paso 6 – Remove Excess Solder (Use De-solder braid)



Step 7 / Paso 7 – Inspect your Work and Correct if needed



Step 8 / Paso 8 – Put 1 Drop of Glue to Fix the Socket



Step 9 / Paso 9 – Finish Installation with Wire to 3.3vcc



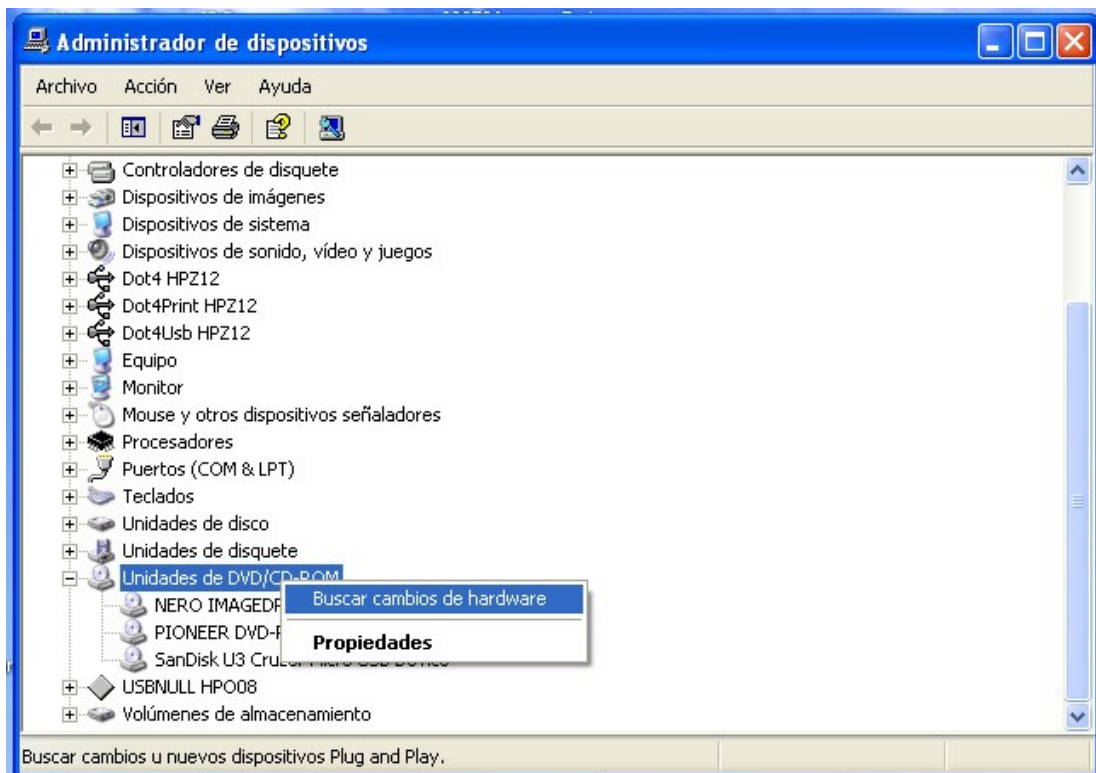
Step 10 / Paso 10 – Test Mode B



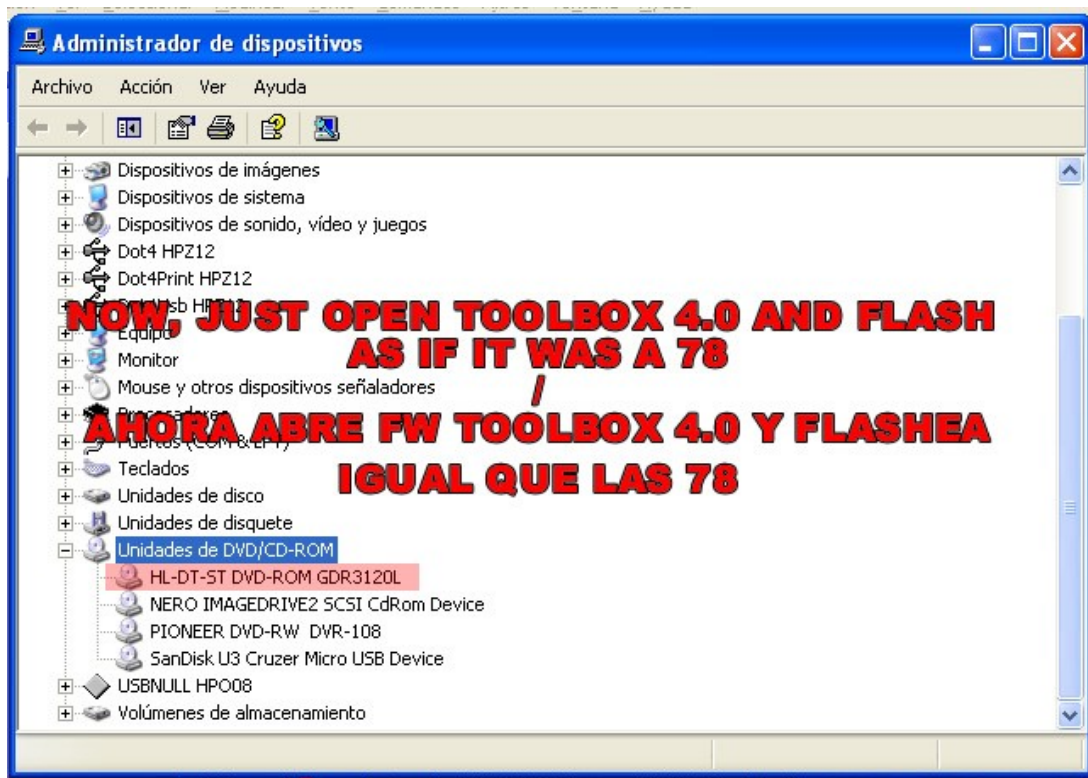
Step 11 / Paso11 – ISOLATE 79 PASSKEY AND CLOSE DRIVE



Step 12 / Paso 12 – Windows Detection



Step 13 / Paso 13 – With the drive visible on Windows, Flash like the 78



Step 14 / Paso 14 – ENJOY !!!