

Changing Drive Keys

First we need to get the key from the old drive and dump the firmware from your new drive we need to use either [memdump](#) (Hitachi) or mtkflash (Samsung)

For the Hitachi drive you need to get the drive into modeB and boot to windows desktop with the drive connected, open my computer and write down the drive letter for the Hitachi drive, now go to start / run type cmd press enter, now type CD \ press enter, now the following command will dump your drives firmware and call it orig.bin.

```
memdump_win %1 12200 8 8000 orig.bin
```

Replace %1 with your drives letter for example mine is H so I would type:
memdump_win %1 12200 8 8000 orig.bin

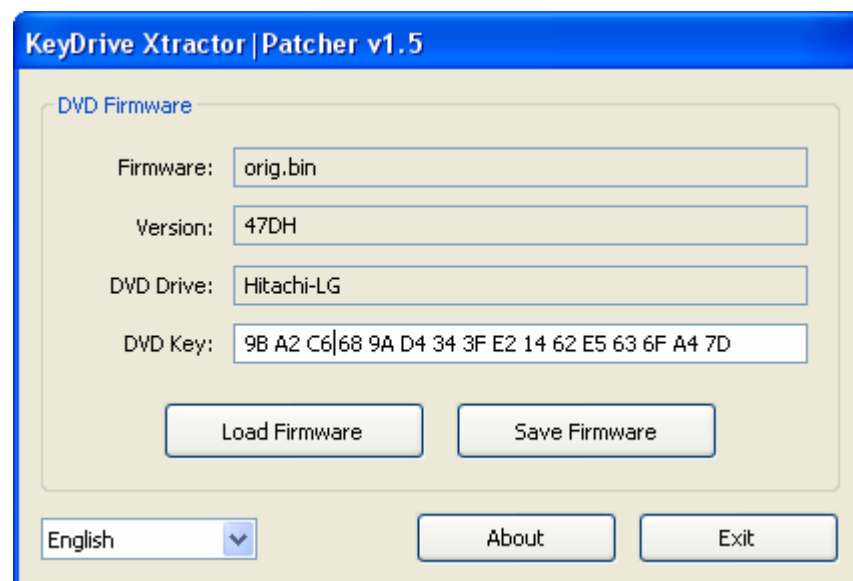
For the Samsung drive you need to boot into MSDOS with either a floppy disk or USB stick I prefer the USB option myself, once in dos you will need to use the following command to dump the drives firmware and call it orig.bin

```
Mtkflash r /m orig.bin
```

You will now be asked to choose what SATA port your drive is connected to I get 4 choices you might get more or less, anyhow mine is connected to 3

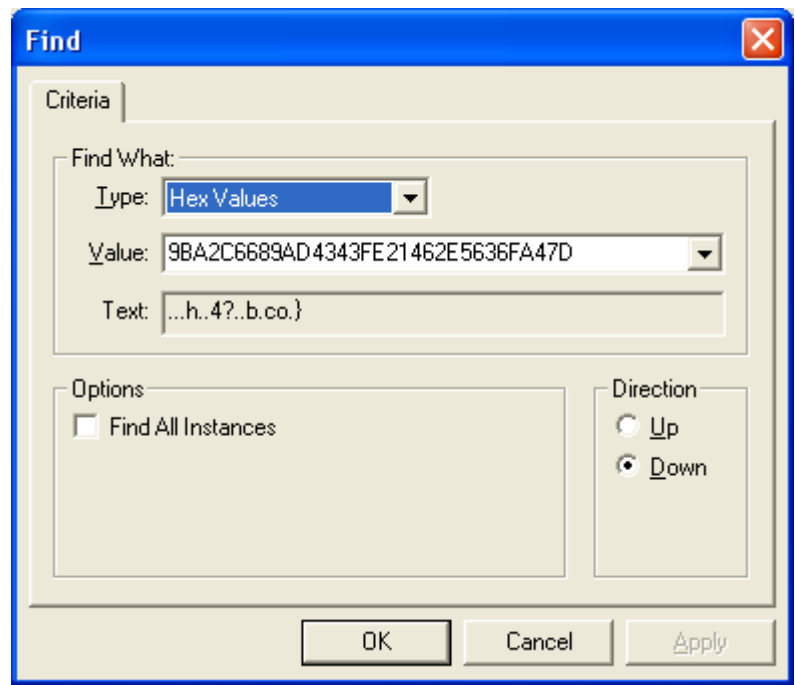
Now you have your drives orig.bin firmware we need to use another program to locate the KEY I use a program called [Keydrive Xtractor 1.5](#)

Open keydrive Xtractor and click the button called Load Firmware open your firmware file you just dumped from your drive, you should see something like this, make a note of the DVD Key.

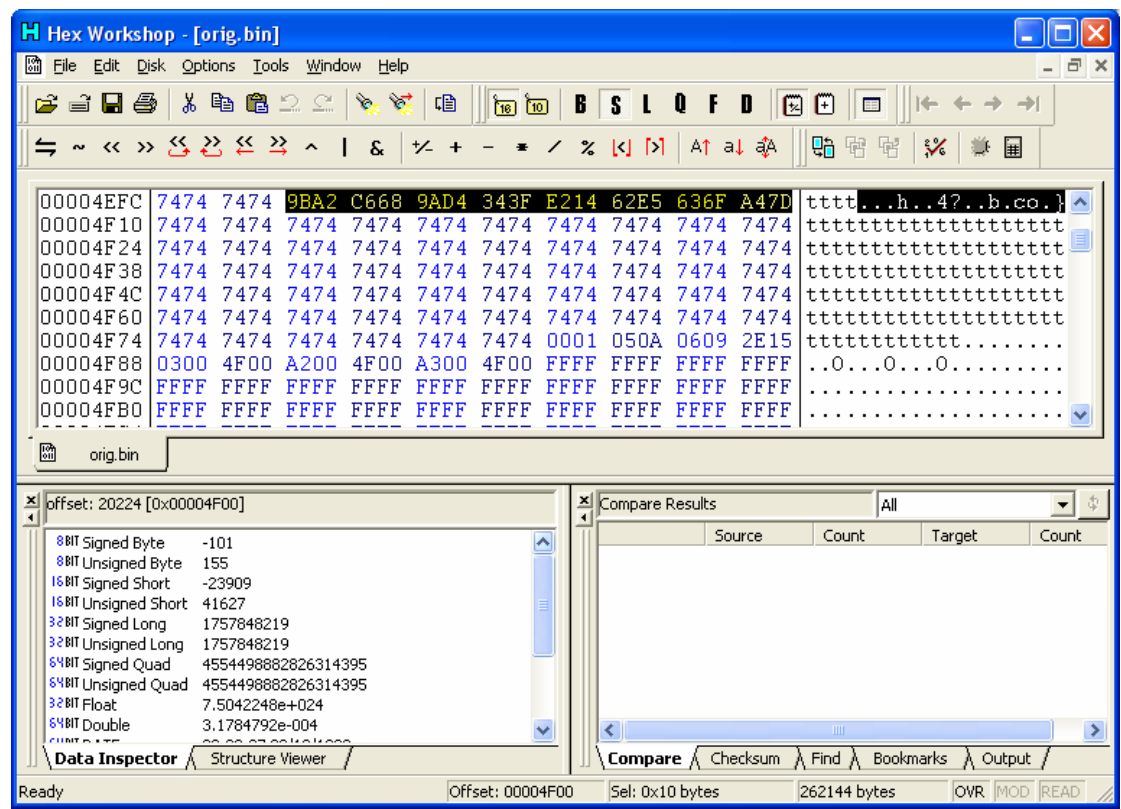


Now do a Google for a FREE program called [Hex Workshop](#) run the program and open both firmware files locate the drive key position in the new drives firmware by doing a search for your key but delete the spaces or it won't find it.

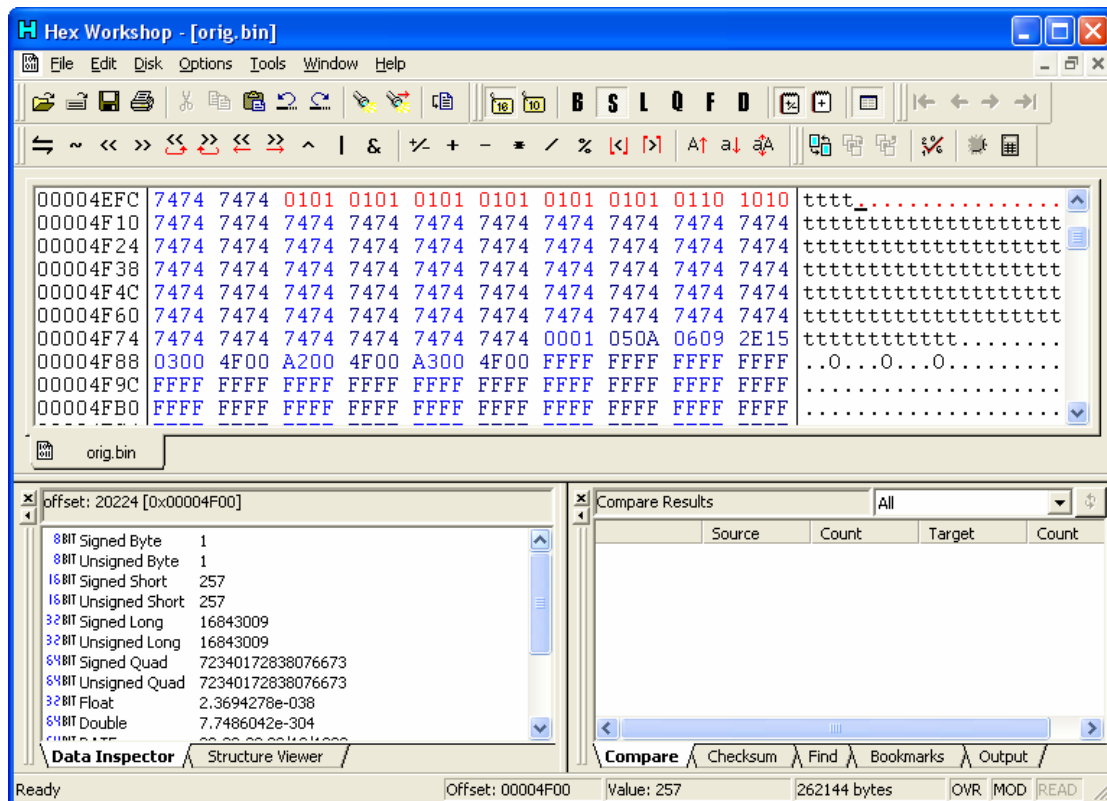
For example in hex workshop go to edit / find



Type in your key and click ok you should now see a screen similar to this



Once you have found the location of the key in the new drives firmware you need to replace it with the key from your old drive like so



Now click file save as newfirm.bin

The next step depends on what model drive you will be putting your new drive key on

If it's an Hitachi you **MUST** encrypt the firmware first this is done using a program made by Loser named [FirmCrypt](#)

With the Hitachi drive in modeB boot into windows and go to start / run type CMD press enter now type in the following command

```
firmcrypt e newfirm.bin newfirm.e.bin
```

So there it is: the encrypted firmware newfirm.e.bin ready to get flashed.

Now to flash the new key to the Hitachi drive we use a program called [flashsec47_win](#) the following command and press enter

```
flashsec47_win %1 newfirm.e.bin 90004000 1000
```

Replace %1 with your drives letter for example mine is H so I would type:

```
flashsec47_win H newfirm.e.bin 90004000 1000
```

That's it Job done 😊 you can now connect the new drive up to your 360....

Now if you have a Samsung drive you do not need to encrypt the firmware just boot back into dos and type mtkflash w /m newfirm.bin

That's it Job done 😊 you can now connect the new drive up to your 360....